

CERTIFIED LAND CORNER RECORDATION

T-14-N

5	4
8	9

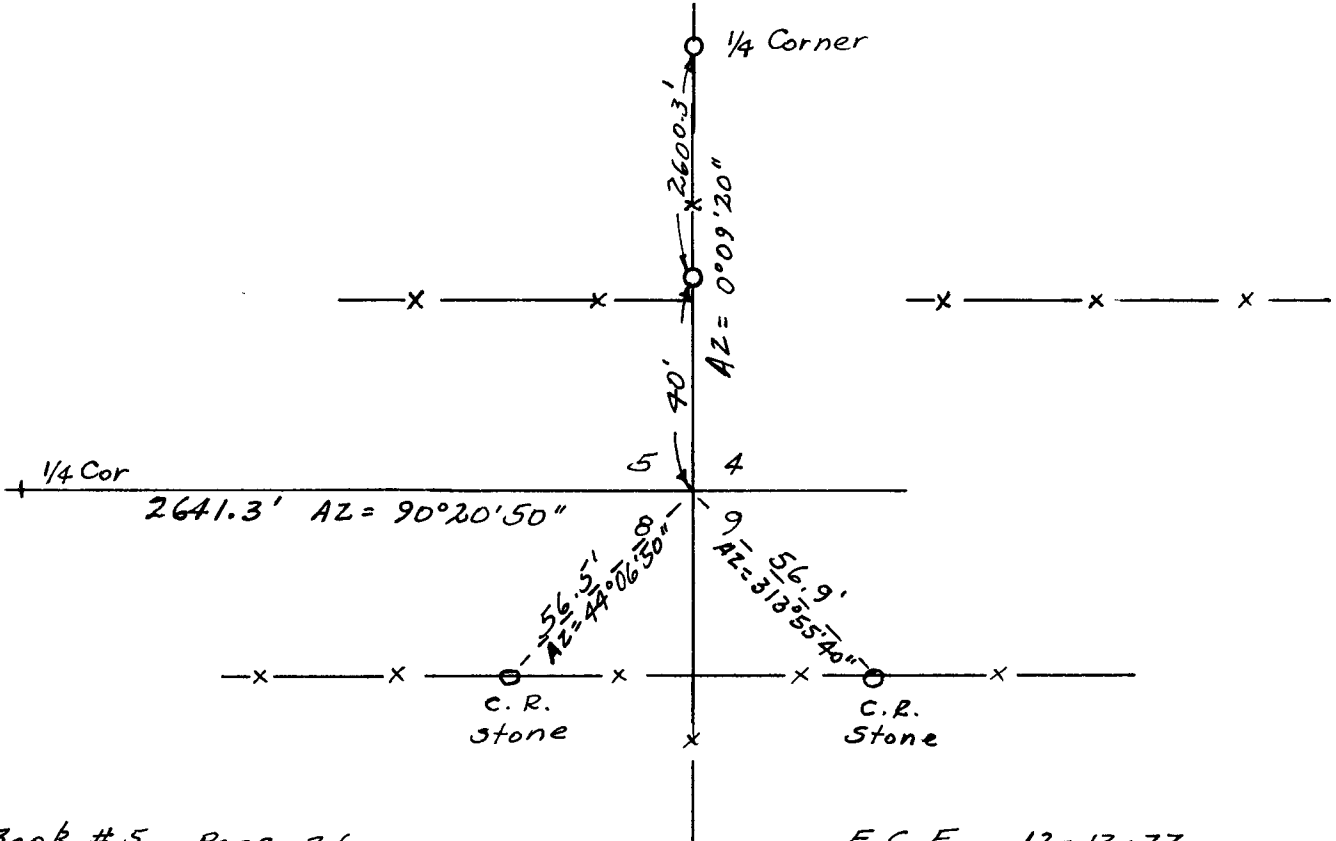
R-66-W

DESCRIPTION OF CORNER EVIDENCE FOUND, AND ORIGINAL RECORD (If known)

Found disturbed pipe near corner location. Found undisturbed Pipe 40 feet North. Found Two C. R. Stones, one about 40 feet South and 40 feet East, the other about 40 feet South and 40 feet West. Original Monument described as a Granite Boulder 24" x 10" x 5"

DESCRIPTION OF MONUMENT AND ACCESSORIES ESTABLISHED TO PERPETUATE THE ORIGINAL LOCATION OF THIS CORNER:

SKETCH, WITH COURSE AND DISTANCE TO ADJACENT CORNER IF DETERMINED IN THIS SURVEY.
(May Sketch or Paste Reproduction on Reverse Side.)



Book #5 Page 26

E.C.F. 12-13-77

I, Edward C. Fry certify that I have carefully performed or reviewed the work done on the diagrammed corner as reported on this recordation form and approve the same.

Edward C. Fry, Wyo. P.E., L.S. 662
Signature of Surveyor Registration No.

STATE OF WYOMING,
Office of Clerk and Recorder,
County of Terrance

#491662

This "corner record" was filed for record on the 17 day of July, 1978, was noted on the cross-index plat and is assigned page No. _____, in book No. _____.

Janet C. Whitehead
County Official

Cross Index No.	T. _____	R. _____	Mer.
<u>E-9</u>	T. <u>14</u>	R. <u>66</u>	Mer.
_____	T. _____	R. _____	Mer.
_____	T. _____	R. _____	Mer.
_____	T. _____	R. _____	Mer.
_____	T. _____	R. _____	Mer.
_____	T. _____	R. _____	Mer.

E-9 14-66